

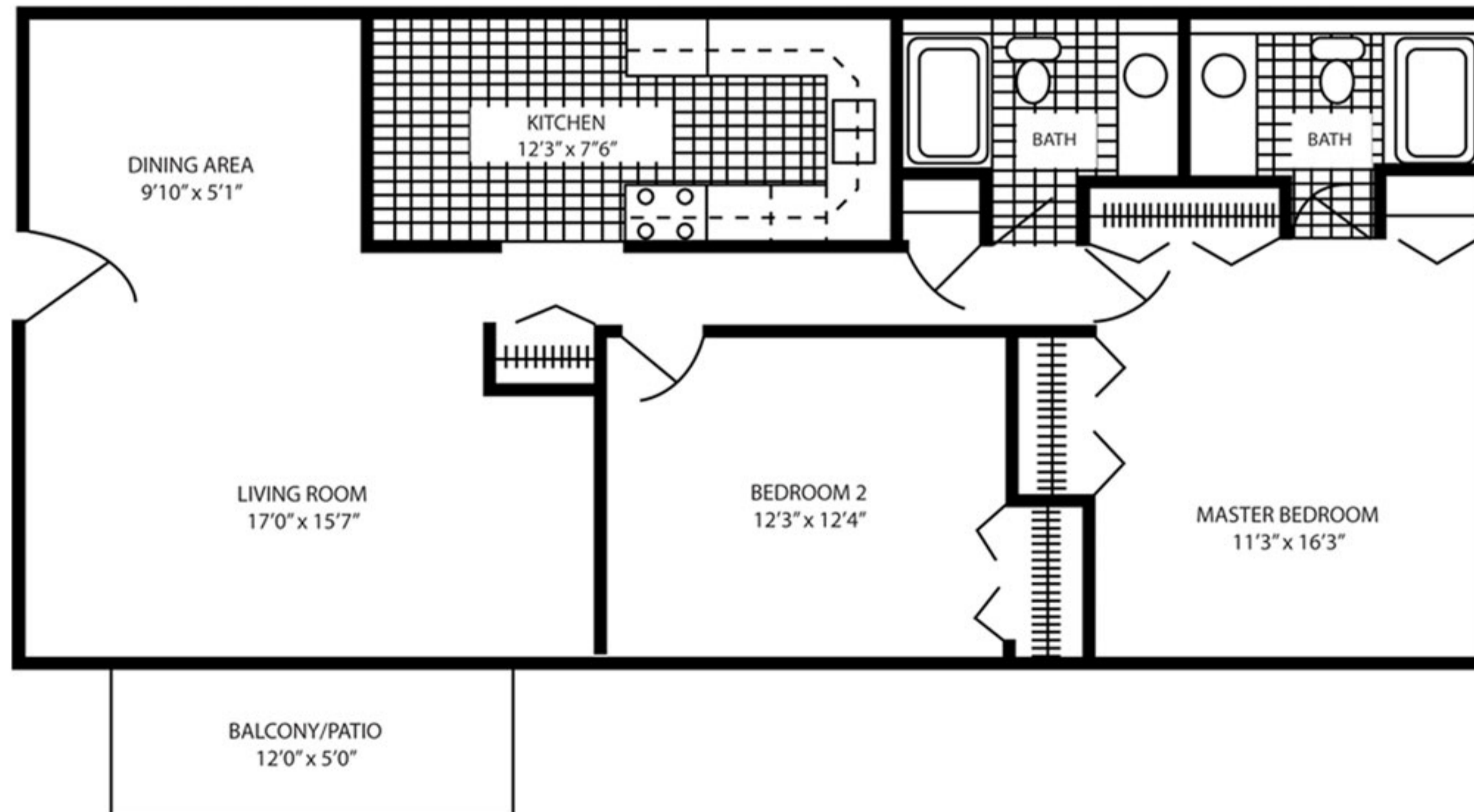


PER MONTH

1130 SQUARE FEET

EDGEWATER WALK

TWO BEDROOM BATH FLOOR PLAN



All Dimensions are approximate

APARTMENT LOCATION

16703 Lakewood Drive, #3
Tinley Park, IL 60477

COMMUNITY FEATURES

- 10-Acre Private Recreation Area With Spring Fed Lake
- 24-Hour Emergency Maintenance
- On-Site Management Office
- Forest Preserve Like Setting
- School Bus Stop
- Close To Golf Course
- Across From Forest Preserve
- Onsite Laundry & Storage Facilities
- Participate in the Crime Free Housing Program

OFFICE PHONE

708-429-2299

