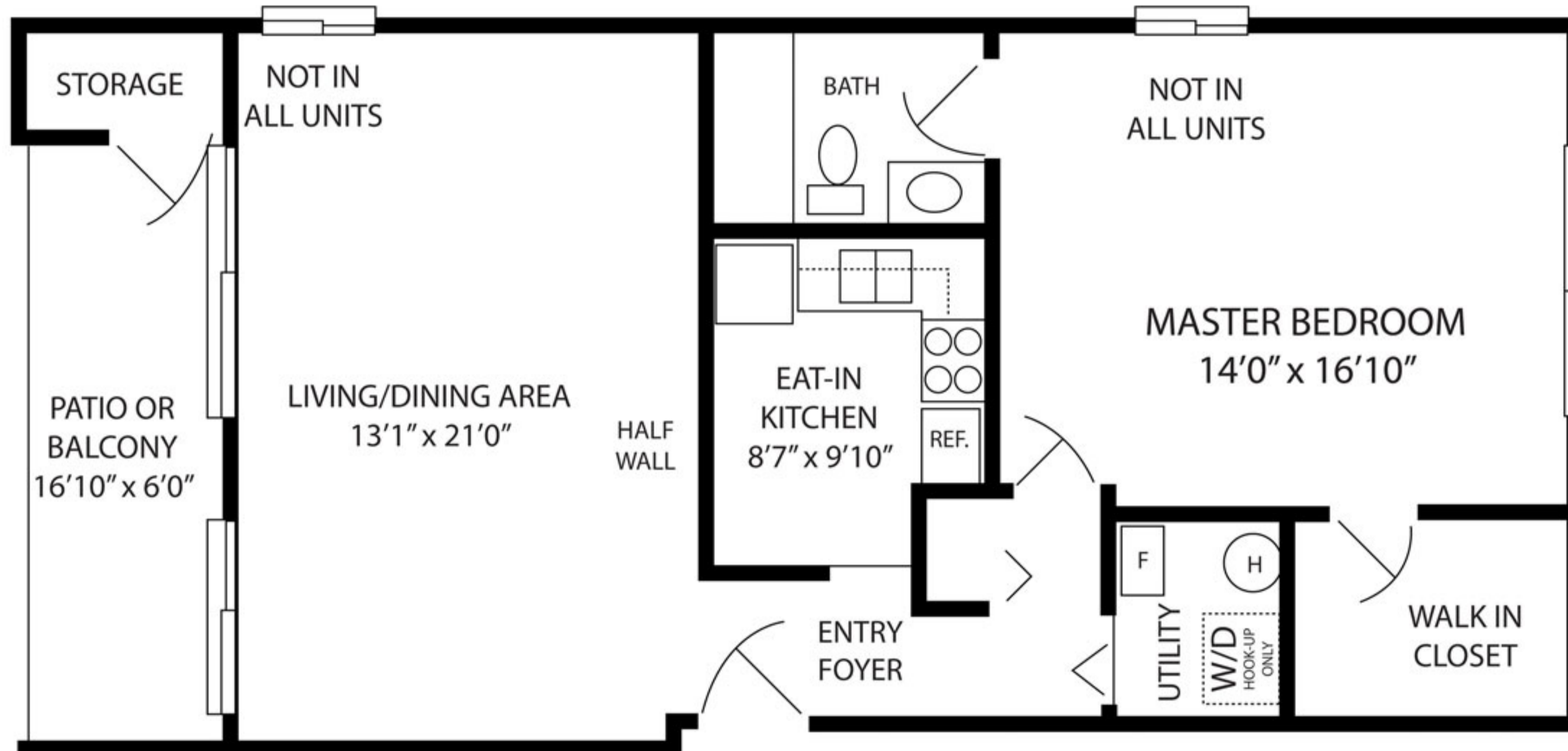




PER MONTH

956 SQUARE FEET

**TOWERS OF EDGEWATER**



**ONE BEDROOM STANDARD**

All Dimensions are approximate

**APARTMENT LOCATION**  
5910 W. Lakebluff Drive, #6A  
Tinley Park, IL 60477

- COMMUNITY FEATURES**
- 10-Acre Private Recreation Area With Spring Fed Lake
  - 24- Hour Emergency Maintenance
  - On-Site Management Office
  - Forest Preserve Like Setting
  - School Bus Stop
  - Close to Golf Course
  - Across From Forest Preserve
  - Garage Rentals Available
  - Washer & Dryer Hook-Ups In Select Units
  - Central Heating and Air Conditioning
  - Participate in the Crime Free Housing Program

**OFFICE PHONE**  
708-633-1555

